

The RiXmatic plus fulfils all wishes:

The immersion x-ray processor fulfils all present requirements of a modern and efficient developing automat:

- **Auto-activator**

When pressing the start button, the automatic programme control will be operative and individually regulated for each film.

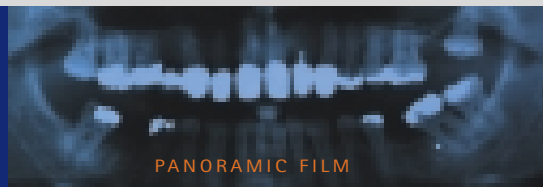
- **Automatic film drying**

Very powerful dryer-blower for fast and efficient film drying.

- **Electronical bath heating**

The electronically regulated bath heating guarantees a steady temperature (+/- 0,1 °C) at all times. This way an optimal picture quality and life span of the Ritter® developing concentrate (up to 12 weeks per batch) is achieved.

The unbeatable classic in
x-ray film processing:
RiXmatic plus



plus



INSTALLATION – a children's play

Filling and changing of the developing concentrate

The emptying and cleaning of the bath tanks is very simple. The used concentrate will be emptied via the individual hoses into the disposal- canisters (see picture on back). The used water bath will be emptied into the water system. Integrated overflow devices guarantee a safe outflow of superfluous water and concentrate.

Made in Germany



RiXmatic plus

Best durability

- Each component used is extremely stable and proven for many years
- Least service costs over many years
- Extremely durable
- Minimal maintenance
- No expensive cleaning aids necessary
- Immersion system, therefore no exchange of expensive roller-systems
- When developing concentrate is being changed, only quick cleaning of bath tanks and transport shaft is necessary
- Frugal and carefree
- Unique development-capacity
- Development of an infinity of intra-oral x-ray films
- Up to 18 intra-oral films simultaneously
- High volume, with pleasure
- Best life span of Ritter® developing concentrate
- No expensive regeneration necessary; Ritter® = immersion system
- Up to 12 weeks per batch, therefore much less expensive than other developing concentrates (approx. 4 weeks)

Simple operation

- The upper part RiXmatic plus has 2 openings which can be closed via sliding doors so that no light can enter the developing area. This way film holders can very easily be placed in and taken out. The RiXmatic plus is designed for darkroom operation.
- For a quick diagnosis you can interrupt and continue the development process

Unique price

- Purchasing price is very reasonable
- Cleaning-, maintenance- and developing concentrate-costs are minimal
- Total costs during product life-cycle are very economic

Technical Specifications

Operational voltage	220 – 240 V
Frequency	50/60 Hz
Power consumption	450 W
Weight	approx. 17 kg
Colour	upper part white, bottom part black
Dimensions	74x54x62 cm (WxDxH) (29.1 x 21.3 x 24.4 in)
Capacity of baths	3 x 9 ltr.
Water connection	Supply 3/4" Downspoon Ø 20mm
Run-through time	approx. 7 minutes



Developing Concentrate

The Ritter® developing concentrate harmonizes perfectly with the Ritter® automatic immersion x-ray processor and guarantees an optimal development. The ideal developing temperature lies at 25 °C (77 °F). This and the possibility to cover the individual bath tanks allow a life span of the developing concentrates of up to 12 weeks (1 batch).



Differences between samples and original surface are technically imposed.
Alterations due to new technical developments reserved. © Ritter 2004



Film clip RiXmatic plus OPG
for panoramic films
15 x 30 cm



Film clip RiXmatic plus
for intermediate
and for formats up to
18 x 30 cm



Film clip RiXmatic plus
for all miniature formats

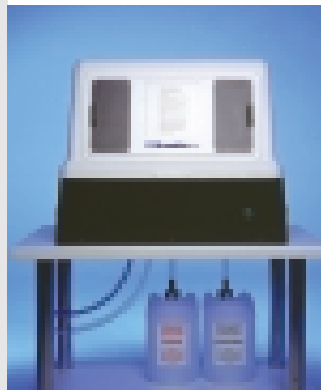


Status development basket
RiXmatic plus for up to 18
films (2 x 3 cm and 3 x 4 cm)

Film holders

2 different film holders are available for the development of panoramic films (15 x 30 cm) as well as teleradiographs and film formats up to 18 x 30 cm. Intra-oral x-ray films are being developed by using a film clip for up to 3 films or a status development basket for up to 18 films.

RiXmatic plus



Connections

The water bath will be filled via a water supply hose. As standard the inlet and all outlets are routed through the underside of the appliance. If this is not possible due to space requirements, the inlet and outlets can also be positioned at the rear or side of the appliance.

- Best durability
- Simple operation
- Minimal maintenance
- Unique price

System Extensions

Ritter® offers all System Extensions the modern dentists demands today. Ritter®, functional, simple, innovative - please ask your local dealer or our sales managers!

Ritter®Concept GmbH
Administration
In der Wanne 47
D-89075 Ulm · Germany
Tel. +49 (0) 731/ 175 410-0
Fax +49 (0) 731/ 175 410-10
info@ritterconcept.com
www.ritterconcept.com

Ritter®Concept GmbH
Production/Shipping
Bahnhofstr. 65
D-08297 Zwönitz · Germany
Tel. +49 (0) 37754/13-0
Fax +49 (0) 37754/13-342
info@ritterconcept.com
www.ritterconcept.com